

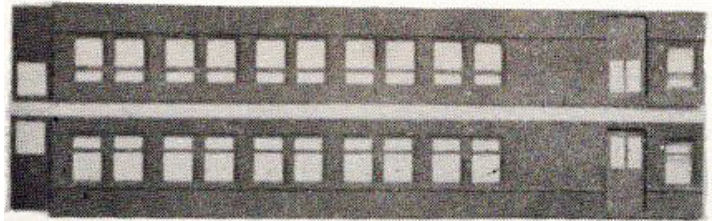
## WALTHERS O SCALE PASSENGER CAR KIT NUMBERS

**For Interurbans, suburban/commuter, postal, baggage, combines, coaches and diners.**

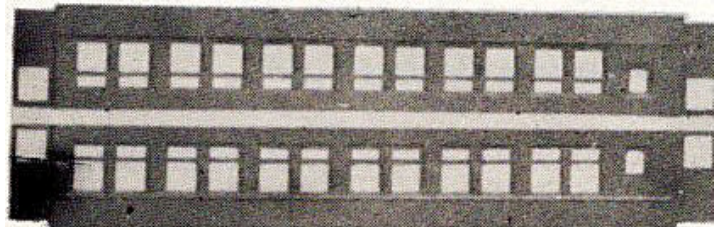
From the early 1940's onward, Walthers fielded many heavy-weight and later, lightweight streamline car kits as well as interurban and suburban kits. All kits shared a basic design with milled wood roofs of various types, stamped sheet metal sides, cast soft metal ends and a variety of related detail and finishing parts. Some parts were specific for modeling certain prototypes.

Scribed Strathmore board overlays were provided for modeling wood car sides on interurbans and open platform car kits in the 4500 series. Here are two interurban sides with valanced windows. These kits were no longer offered by 1958, but the sides and parts were available. All passenger kits were sold less trucks.

4578, wood body 57' interurban combine



4579, wood body 57' interurban coach



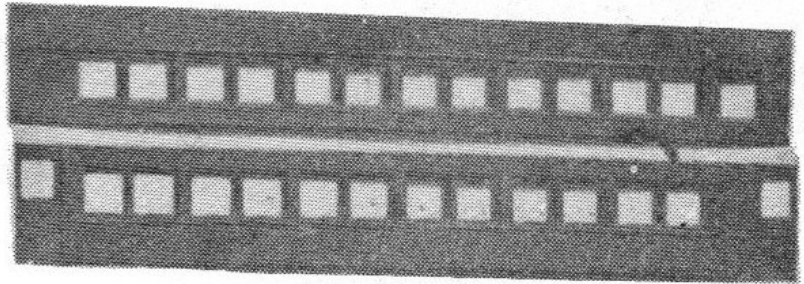
Air conditioning ducts for heavy-weight cars with clerestory or 'monitor' roofs were modeled with a special, curved milled wood strip. An assortment of trucks suitable for passenger service was provided by Walthers, enabling closer matches for certain prototypes.

In the 1950's, Walthers began a new numbering system for the passenger kits. Initially in the 4000 series, it was changed to the 9000 series for some 4000 kits. Most 9000 series kits were new or revised issues. Yet even by the 1960's there were still some 4000 series kits being sold. These were old inventory that would not be reissued.

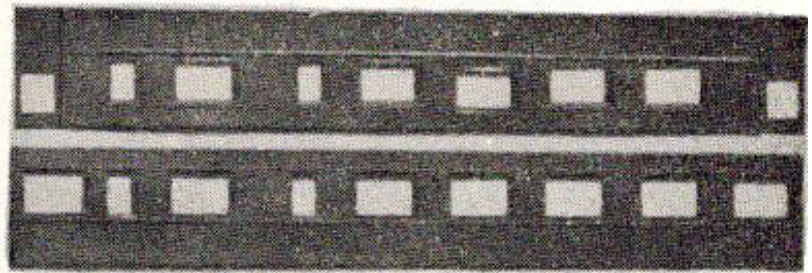
Kit numbers follow the old numbering with new numbers added. Walthers catalogs from 1958, 1967, 1973, 1976, 1978, 1980 and 1983 are the references.

## INTERURBAN AND SUBURBAN KITS

<u>Kit # New</u>	<u>Kit # Old</u>	<u>Type</u>	<u>Length</u>	<u>Roof /Power</u>	<u>Accomod.</u>	<u>Prototype Road</u>
4571 ME		Interurban	57'	Low Monitor/Pole	Coach	Milwaukee Electric



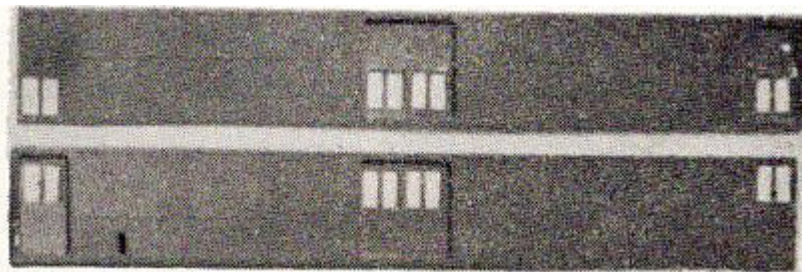
4572 ME		Interurban	57'	Low Monitor/Pole	Parlor	Milwaukee Electric
---------	--	------------	-----	------------------	--------	--------------------



<u>Kit # New</u>	<u>Kit # Old</u>	<u>Type</u>	<u>Length</u>	<u>Roof /Power</u>	<u>Accomod.</u>	<u>Prototype Road</u>
------------------	------------------	-------------	---------------	--------------------	-----------------	-----------------------

4573 CA		Interurban	57'	Low Monitor/Pole	Freight	Chicago, Aurora & Elgin
---------	--	------------	-----	------------------	---------	-------------------------

4573 NS		Interurban	57'	Narrow Arch/Pole	Freight	Chicago, N. Shore & Milw.
---------	--	------------	-----	------------------	---------	---------------------------



4574 CA		Interurban	57'	Low Monitor/Pole	Combine	Chicago, Aurora & Elgin
---------	--	------------	-----	------------------	---------	-------------------------

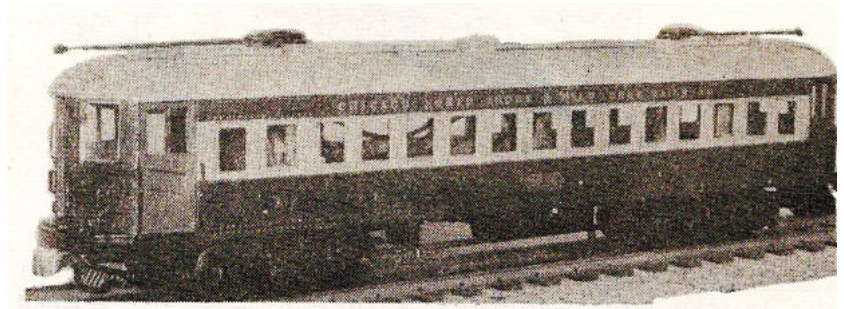
4574 NS		Interurban	57'	Narrow Arch/Pole	Combine	Chicago, N. Shore & Milw.
---------	--	------------	-----	------------------	---------	---------------------------



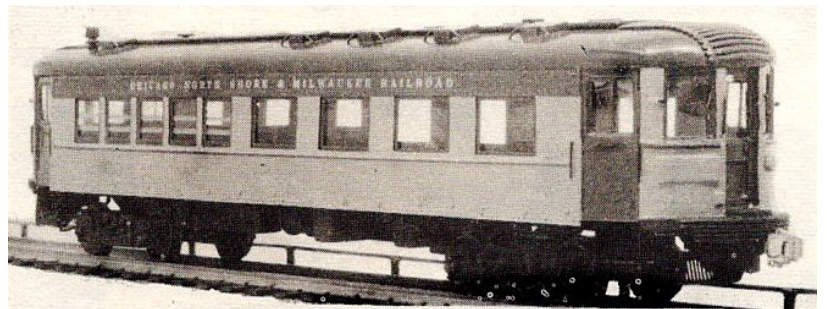


4575 CA Interurban 57' Low Monitor/Pole Coach Chicago, Aurora & Elgin

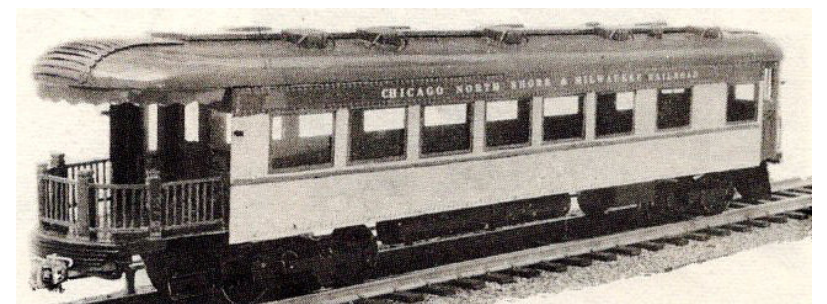
4575 NS Interurban 57' Narrow Arch/Pole Coach Chicago, N. Shore & Milw.



4576 NS Interurban 57' Narrow Arch/Pole Diner Chicago, N. Shore & Milw.

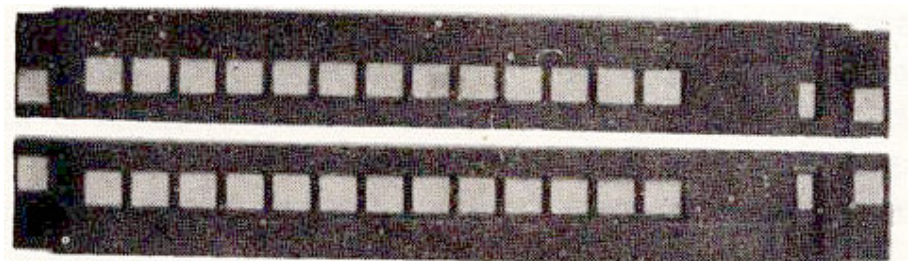


4577 NS Interurban 57' Nar.Arch/Pole Parlor/Obsrvn. Chicago, N. Shore & Milw.



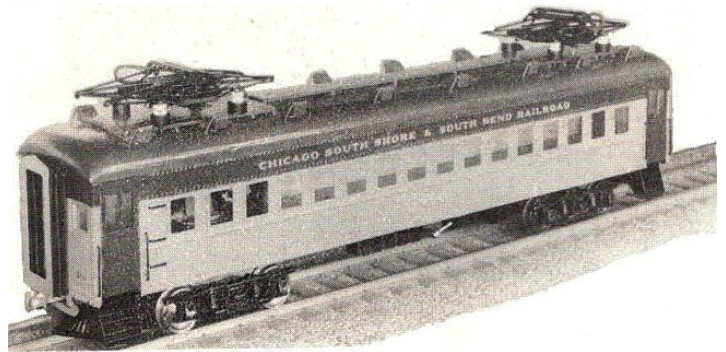
4606 PE Suburban 60' Arch / Poles Bagg/Coach Pacific Electric

4606 SS Suburban 60' Arch/ Pantographs Bagg/Coach Chi.,So.Shr & So.Bend



4607 PE Suburban 60' Arch / Poles Coach Pacific Electric

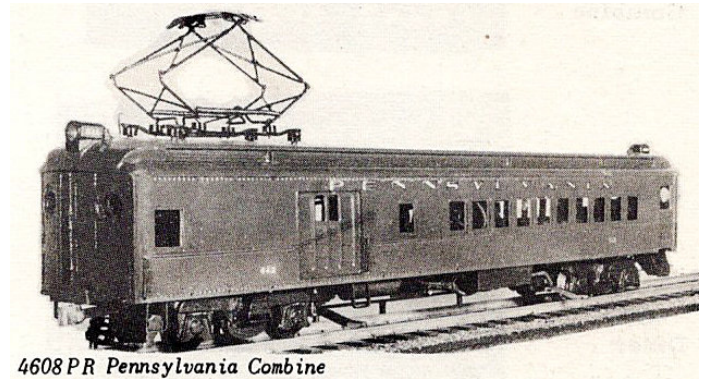
4607 SS Suburban 60' Arch/ Pantographs Coach Chi.,So.Shr & So.Bend



4607SS Chicago South Shore & South Bend Coach.

4608 LI Suburban 60' Monitor 3<sup>rd</sup> Rail Bagg/Coach Long Island

4608 PR Suburban 60' Monitor / Pantograph Bagg/Coach Pennsylvania



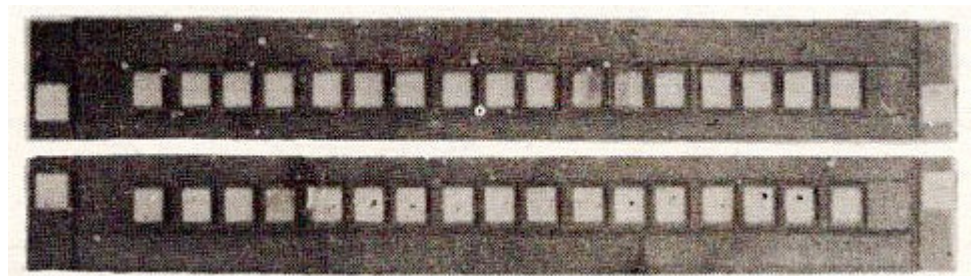
4608PR Pennsylvania Combine

4608 RC Suburban 60' Arch / Pantographs Bagg/Coach Reading Company

4609 LI Suburban 60' Monitor 3<sup>rd</sup> Rail Coach Long Island

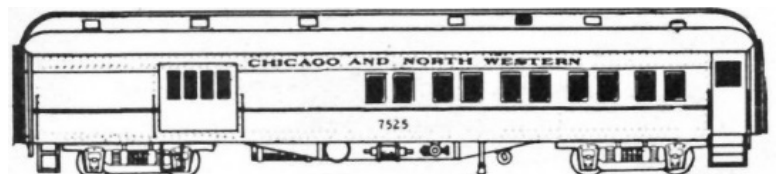
4609 PR Suburban 60' Monitor / Pantograph Coach Pennsylvania

4609 RC Suburban 60' Arch / Pantographs Coach Reading Company



9146

60' Monitor Bagg/Coach C&NW

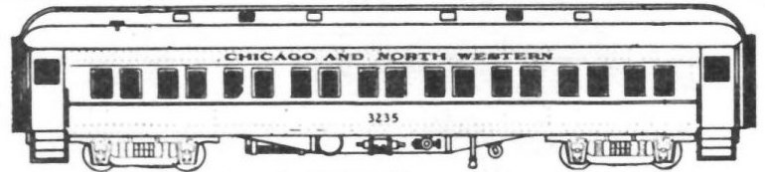


9146 60' Utility Combine (C&NW)



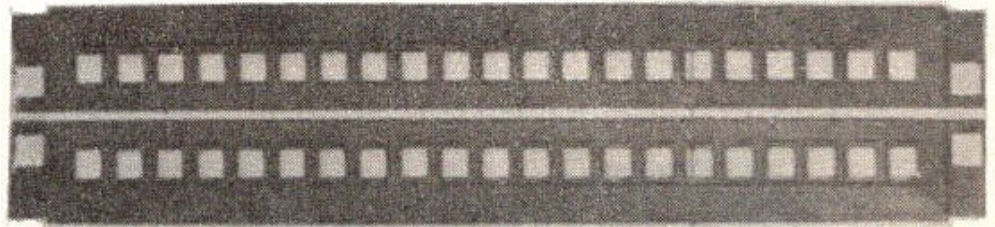
9176

60' Monitor Coach C&NW

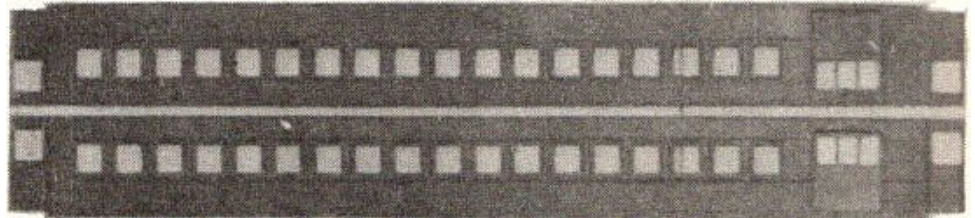


9176 60' Utility Coach (C&NW)

4707 DL Suburban	70' Monitor/Pantograph	Coach	Lackawanna
4707 NH Suburban	70' Monitor/Pantograph	Coach	New Haven
4707 NY Suburban	70' Monitor 3 <sup>rd</sup> Rail	Coach	New York Central



4708 DL Suburban	70' Monitor/Pantograph	Bagg/Coach	Lackawanna
4708 NH Suburban	70' Monitor/Pantograph	Bagg/Coach	New Haven
4708 NY Suburban	70' Monitor 3 <sup>rd</sup> Rail	Bagg/Coach	New York Central

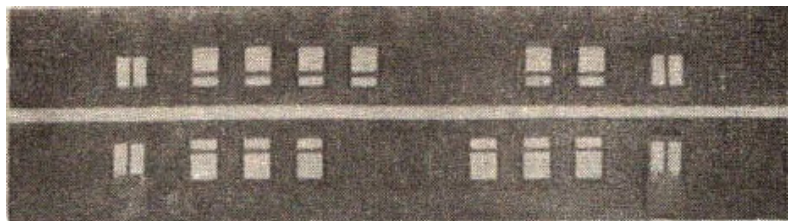


**POSTAL, BAGGAGE AND POSTAL-BAGGAGE COMBINES**

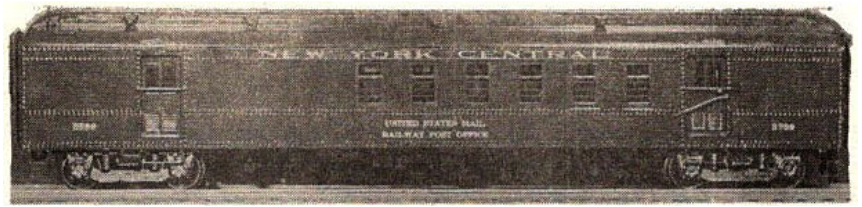
Note: the 4000 series postal cars have valanced windows. The 9000 series do not have them. Both series appear to share the same separately mounted postal doors. Some baggage cars of the 4000 series have narrow, wide, paneled or louvered doors. All 9000 series baggage cars have the same size four-window, plain doors that are separately mounted.

**Kit # New Kit # Old Type Length Roof Windows/Doors on Sides**

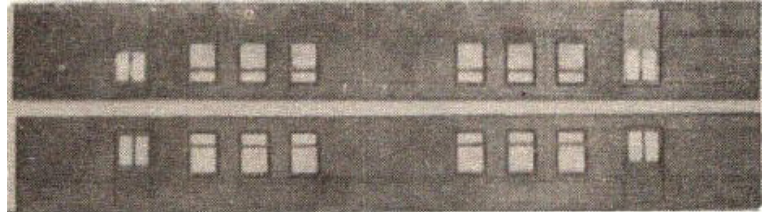
4601 RPO 60' Arch or Monitor



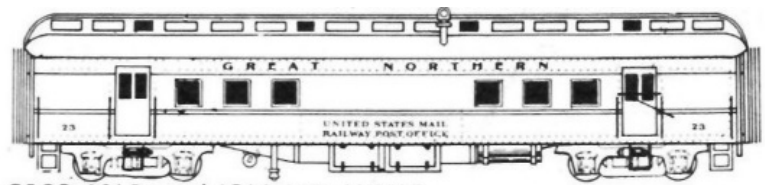
4602 RPO 60' Arch or Monitor



4605 RPO 60' Arch or Monitor

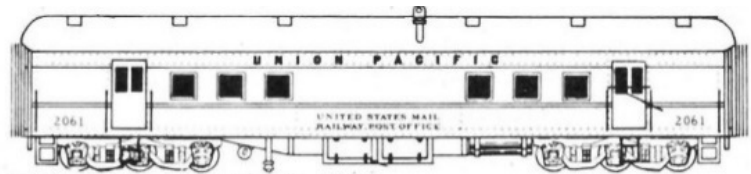


9132 RPO 60' Monitor



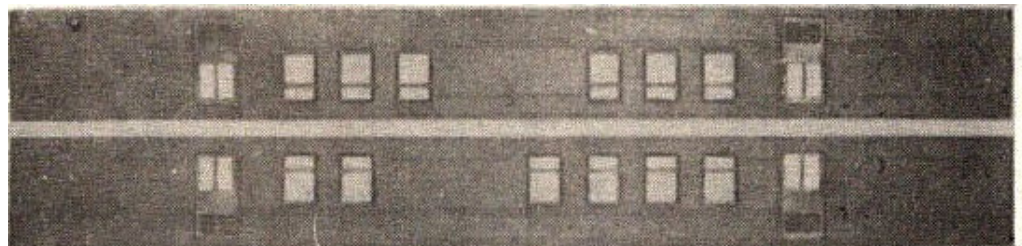
9132 60' Postal (GN, NP, MILW)

9133 RPO 60' Arch

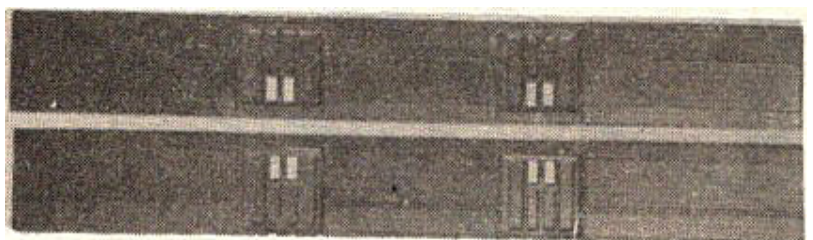


9133 60' Postal (UP, IC, CRIP)

4702 RPO 70' Arch or Monitor



4603 Baggage 60' Arch or Monitor

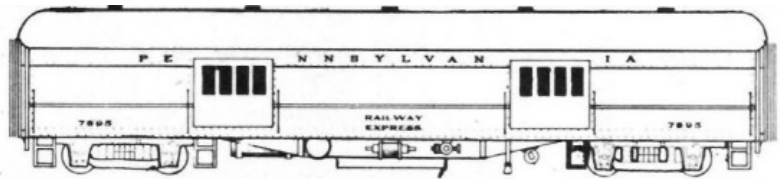




9119

Baggage 60'

Arch

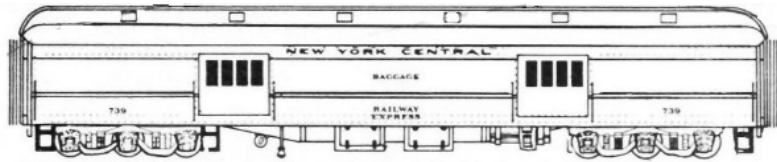


9119 60' Baggage (PRR, B&O, RDG)

9120

Baggage 60'

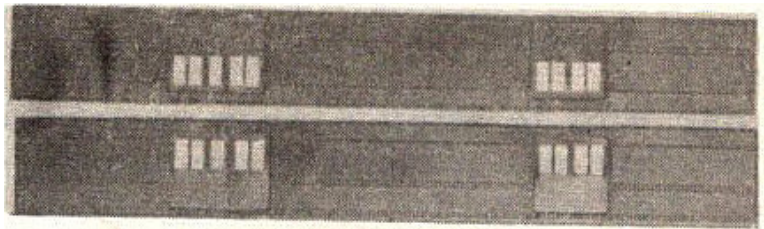
Monitor



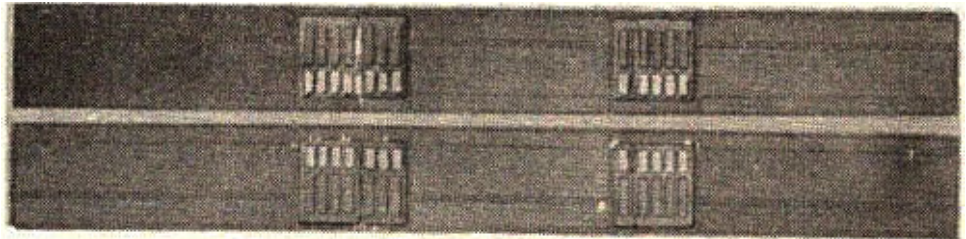
9120 70' Baggage (NYC, D&RGW, L&N, ERIE, GN)

4604 Baggage 60'

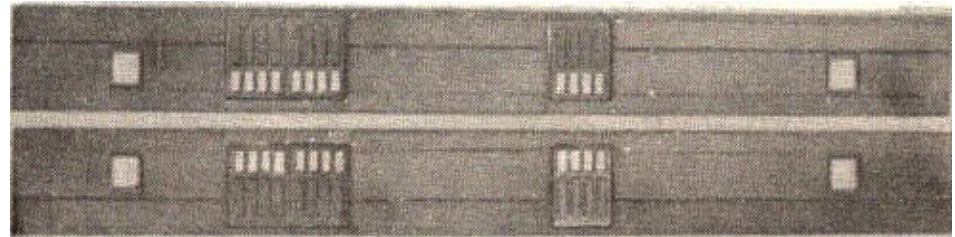
Arch or Monitor



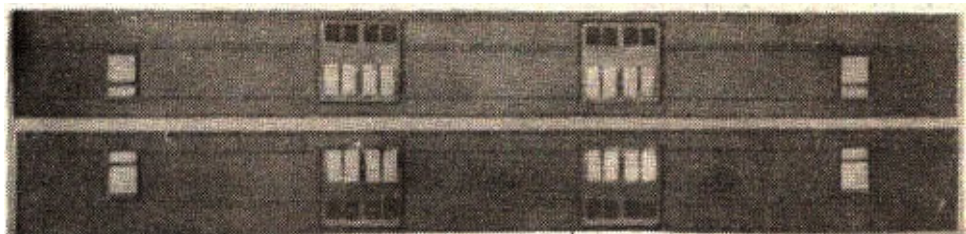
4703 Baggage 70' Arch or Monitor



4704 Baggage 70' Arch or Monitor

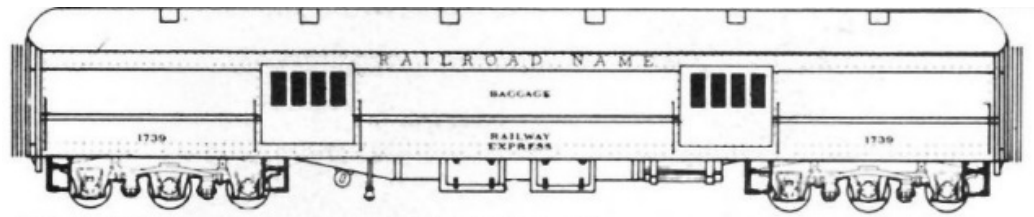


4705 Baggage 70' Arch or Monitor



9121

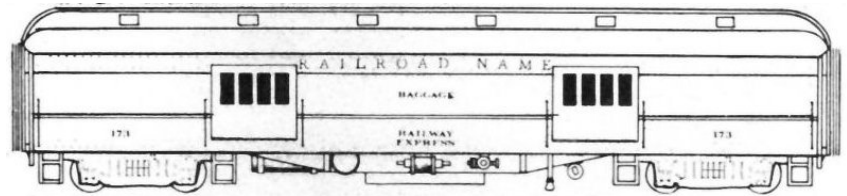
Baggage 70' Arch



9121 70' Baggage (UP, RDG, T&P, SP)

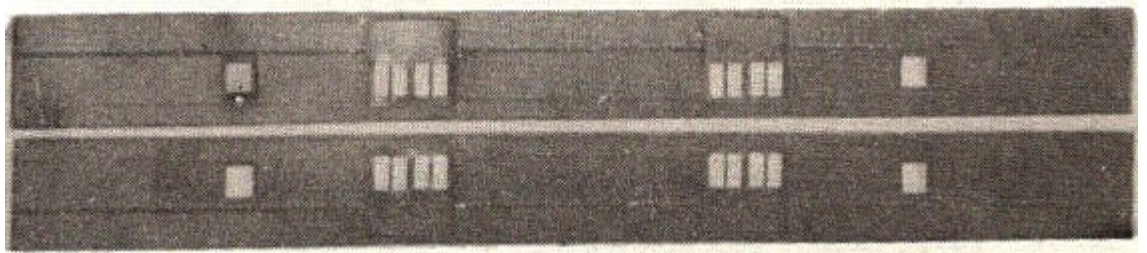
9122

Baggage 60' Monitor

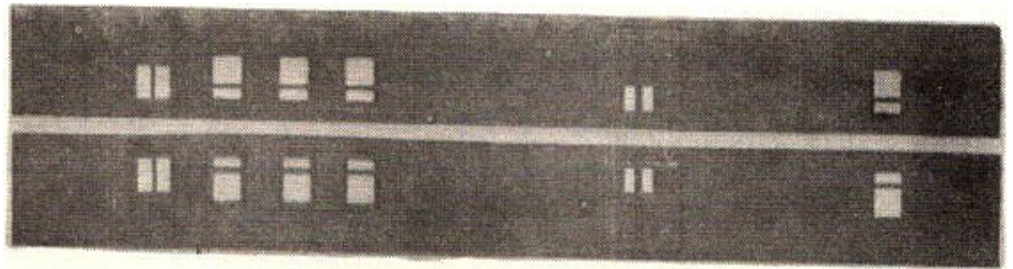


9122 60' Baggage (MKT, C&NW, LV KCS)

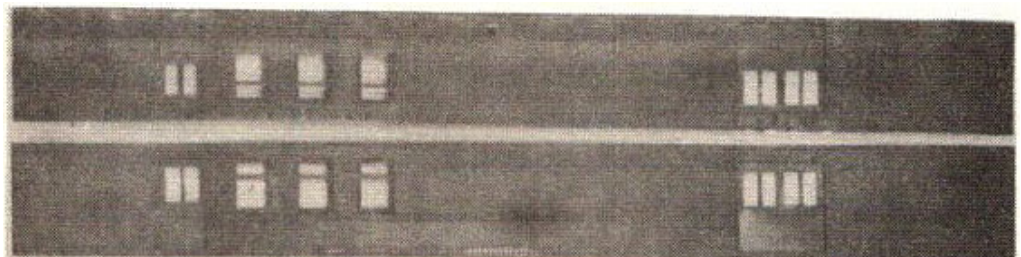
4801 Baggage 80' Arch or Monitor



4701 RPO/Bagg. 70' Arch or Monitor

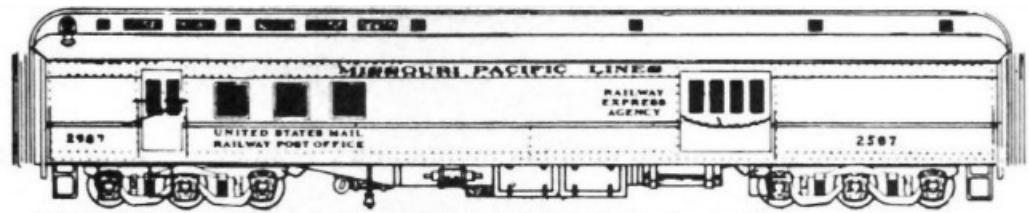


4706 RPO/Bagg. 70' Arch or Monitor



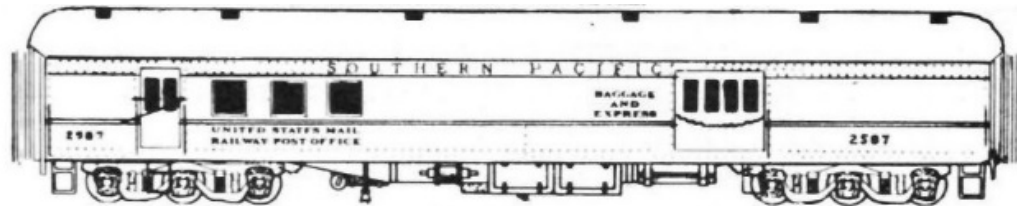


9128 RPO/Bagg. 70' Monitor



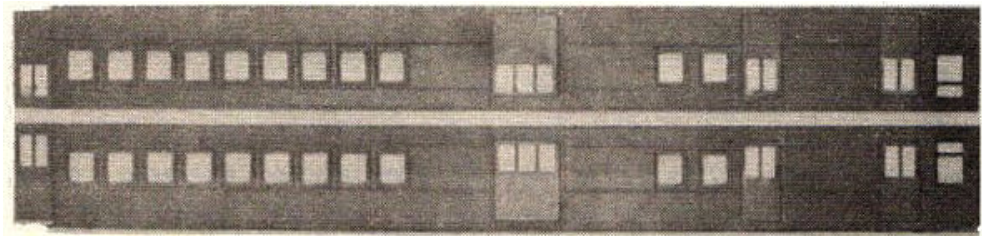
9128 70' Post-Bagg Combine (CNJ, CB&Q, MP)

9129 RPO/Bagg. 70' Arch



9129 70' Post-Bagg Combine (UP, SP, CN, CP, PRR)

4750 RPO/Bag/Coach 70' Arch or Monitor



\*These sides were also used with the 3642 C&NW "Doodle Bug" kit.

### COMBINES AND COACHES

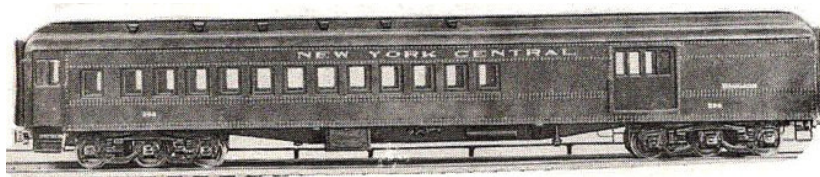
**NOTES:** The roof type of any heavy-weight passenger kit can be Arch or Monitor. Roof selection shown here is from Walthers' naming of the car sides. Car length shown is measured between the inner vestibule walls, not counting the vestibules. This method dates from the 19<sup>th</sup> century for open platform cars. The platforms were add-ons to a car body. A '75' car would be about 85' long overall. "Seats" in coaches are based on number of windows per side with a 'seat' for two persons at each opposite window. Coach, 40-2 seats = 80 passengers. For Parlor cars seats are singles: 40 seats = 40 passengers

**Kit # New Kit # Old Type Length Roof Windows/Doors on Sides**

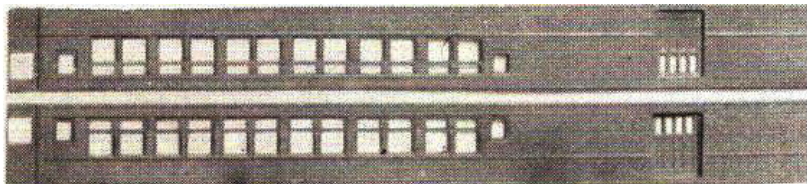
9142 4751 Bagg/Coach 75' Mon. 20-2 seats PRR/B&O



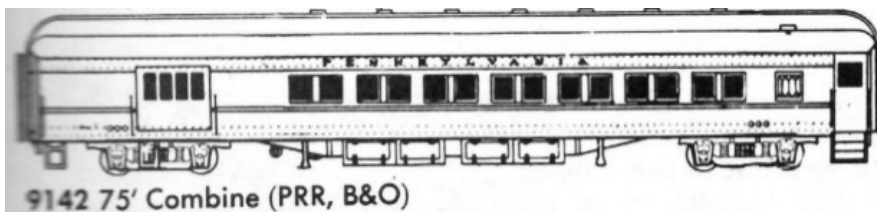
9140 4752 Bagg/Coach 75' Mon. 24-2 seats NYC



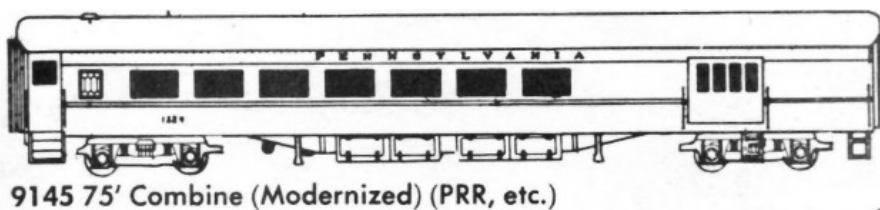
4753 Bagg/Coach 75' Mon. 24-2 seats Early NYC



9142 4754 Bagg/Coach 75' Mon. 20-2 seats B&O/PRR



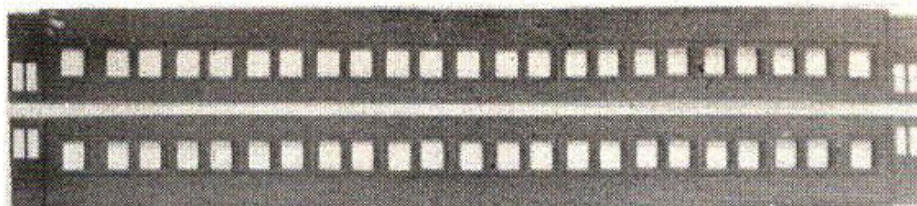
9145 Bagg/Coach 75' Strml Modernized



4761 Bagg/Coach 76' Mon. 16-2 seats Wab., NYC.

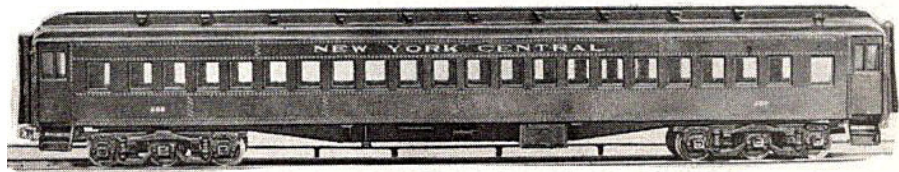


4755 Coach 75' Mon. 40-2 seats PRR





4756 Coach 75' Mon. 40-2 seats NYC

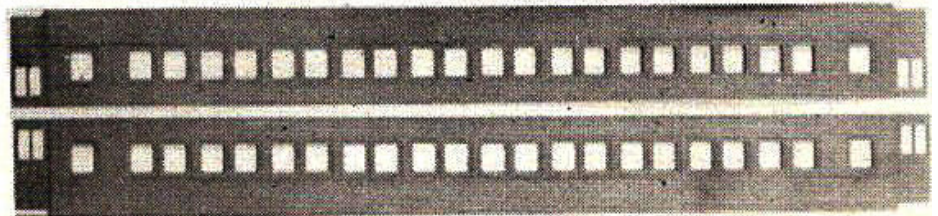


9170 Coach 75' Mon. 40-2 seats

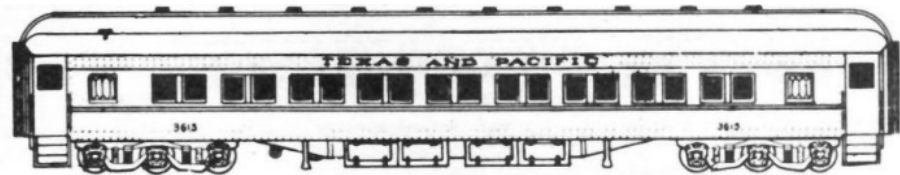


9170 75' Coach (NYC, CNJ, GN, LV, CB&Q, L&N, MP, N&W, E-L)

4757 Coach 75' Mon. 40-2 seats B&O



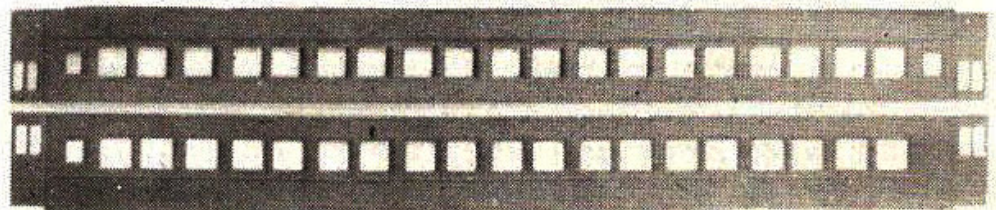
9172 Coach 75' Mon. 40-2 seats \*



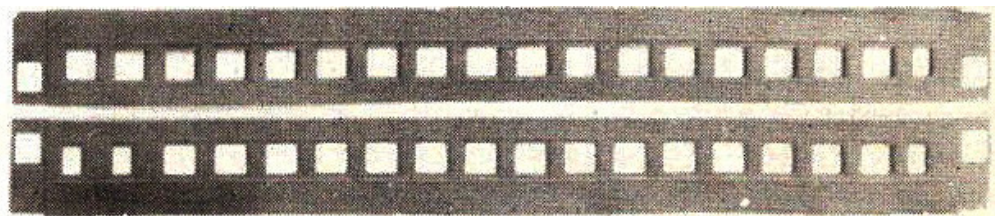
9172 75' Coach (PRR, B&O, C&EI, NH, SP, D&RGW, IC, MKT, NP)

- 9172 was also issued as a Pullman "Betterment" 36 seat Parlor.

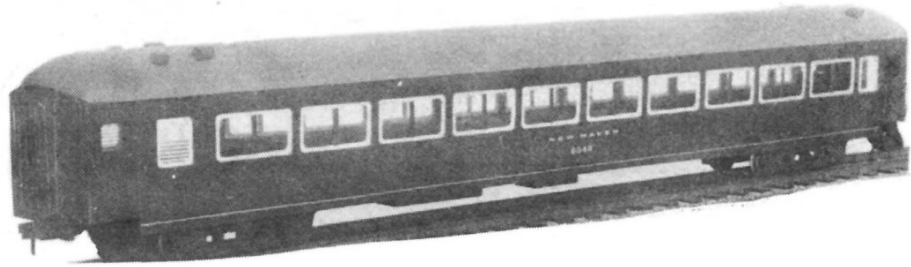
4803 Coach 80' Arch 38-2 seats SP/UP



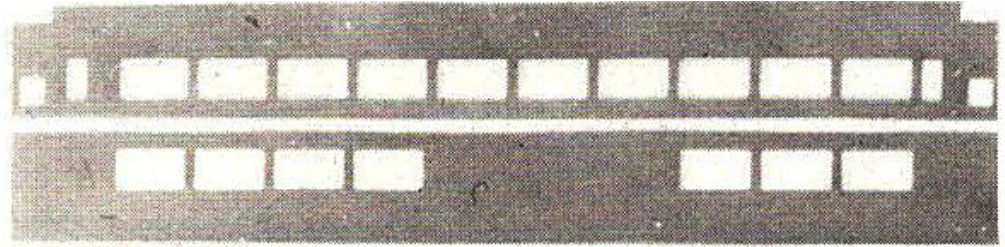
4804 Coach 80' A or M 30-2 seats D&RGW



4841 LW Coach or Parlor 80' Strmline 40-2 C, 40 P NH\*

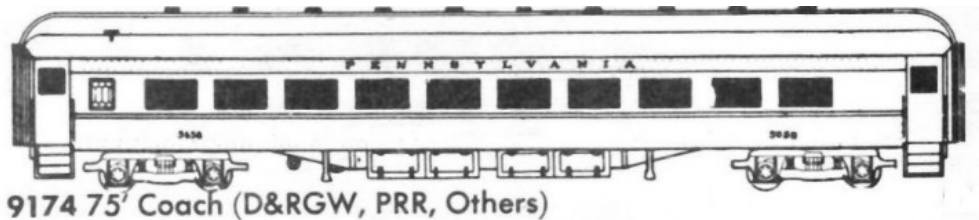


4842 LW Bar/Lounge 80' Streamline NH \*

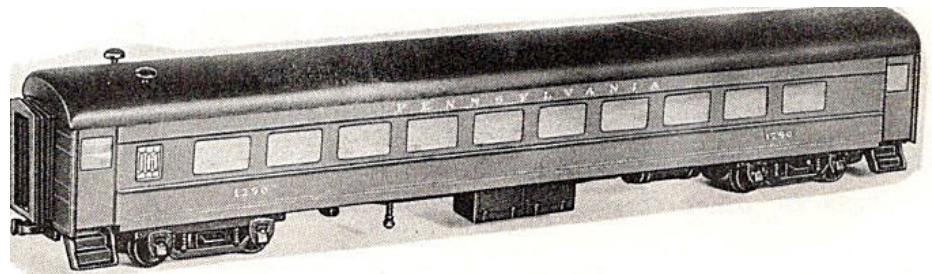


\* These were O scale kits in the 1950's that modeled Osgood-Bradley built "American Flyer" style cars used by the New Haven, Lehigh Valley, Seaboard and Kansas City Southern railroads.

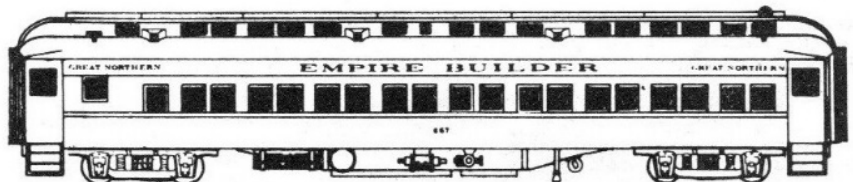
9174 Modernized Coach 75' Monitor 40-2 Seats



9175 Modernized Coach 75' Strmline 40-2 seats

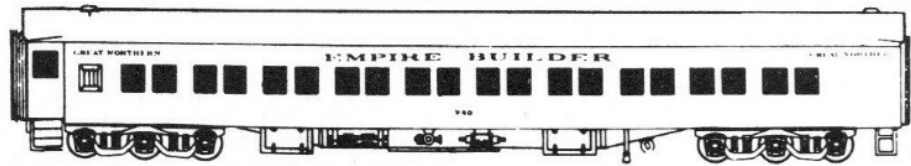


9177 70' Smoker coach/dormitory 23-2 Seats/6 Sec. GN

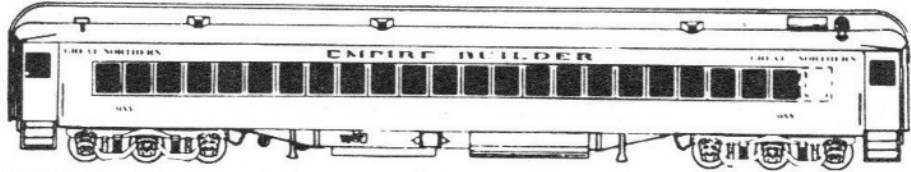




9178 80' "Luxury" Coach Emp. Builder 29-2 seats GN



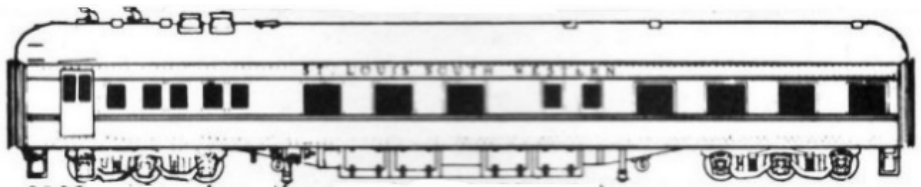
9179 80' Coach 34-2 seats Great Northern



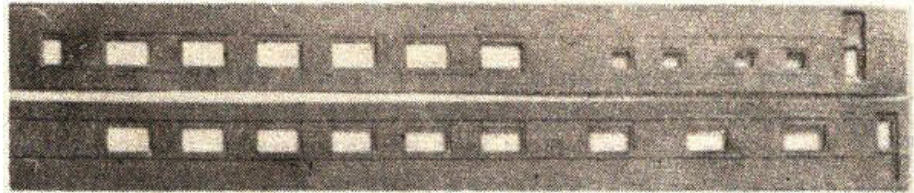
**DINING CARS**

**Kit # New Kit # Old Type Length Roof Windows/Doors on Sides**

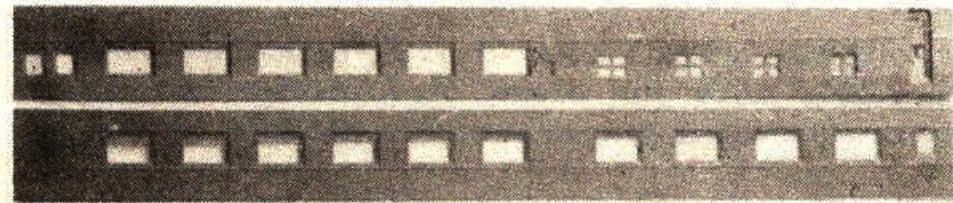
9109 Diner/Solar'm 80' Arch/AC 24 seats StL S W, L&N



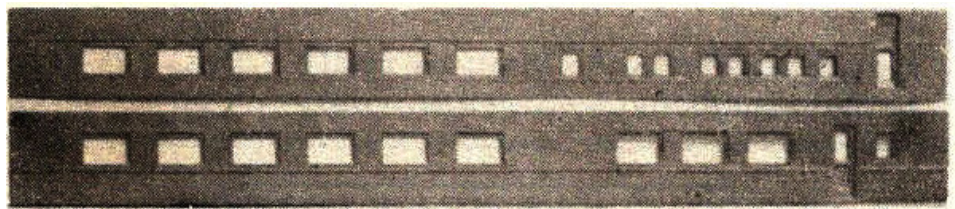
9115 4805 Diner 80' Mon. 36 or 48 seat B&O/PRR



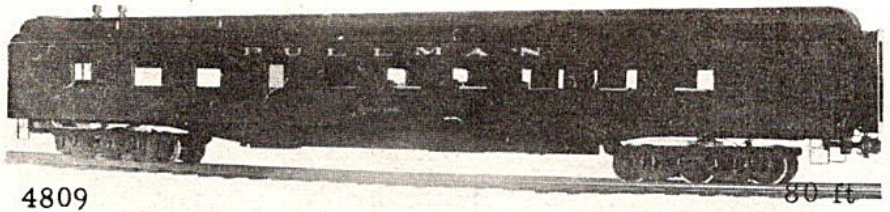
4807 Diner 80' Arch 48 seat SP



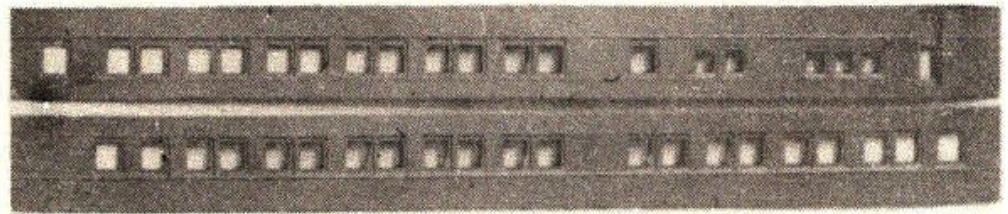
4808 Diner 80' Monitor 48 seat NYC



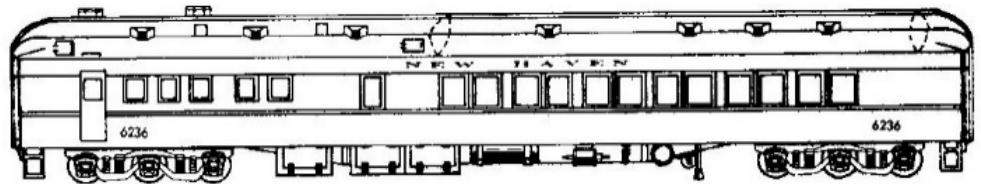
4809 Diner 80' Monitor 36 or 48 seat



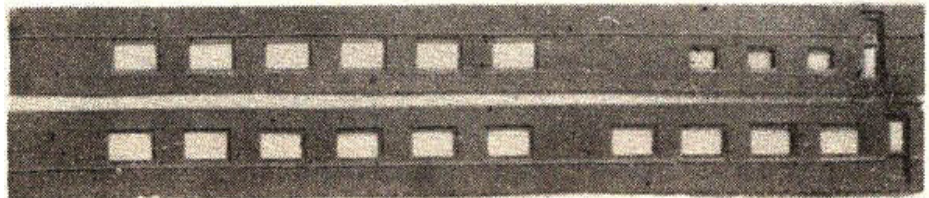
4829 Diner 80' A or M 36 or 48 seat NH



9166 Diner 80' Mon/AC 48 seats NH



4830 Diner 80' Arch 48 seat SP/UP



9165 Diner 80' Monitor 48 seats GN or NP

