

REYNOLDS RAILROAD PRODUCTS

MANUFACTURER OF ATHEARN O SCALE KITS

4711 E. WASHINGTON STREET • INDIANAPOLIS, INDIANA 46201 • PHONE (317) 352-1371

ASSEMBLY INSTRUCTIONS - 40' SINGLE DOOR BOXCAR

Dear Customer:

Thank you for buying this kit. We have included everything except paint and patience to build a truly outstanding model. The most important ingredient in building any kit is patience. Take your time, and your efforts will be rewarded with a great looking model.

Your comments and especially your criticisms of our products are greatly appreciated.

Sincerely,



Robert V. Reynolds

RVR/jr

PARTS LIST

Bag #1 Large Parts Bag

- 2 - 7198 Ends, Wood
- 2 - 7106 Doors, Metal
- 4 - 7110 Door Guides
- 2 - 7120 Ends, Metal
- 1 - 7200 Floor, Wood
- 2 - 7211 Sides, Chipboard
- 1 - 7202 Roof, Wood
- 1 - 7127 Roof, Metal
- 1 - 7167 Roof Walk
- 1 - 7147 Underframe

Bag #2 Small Parts Bag

- 1 - 6002 Reservoir
- 1 - 6000 Triple Valve
- 1 - 6001 Brake Cylinder
- 2 - 7145 Bolster Bearing Blocks
- 1 - 7104 Brake Wheel
- 1 - 7103 Brake Gear Box
- 2 - 6003 Bolster Bearing Screws 440 x 1/4
- 2 - 6004 Truck Kingpin Screws 440 x 1/2
- 6 - 6005 Kadee Coupler Mounting Screws #2 x 3/8"
- 12 - 7135 Roof Ribs
- 2 - 6204 Bolster Springs
- 1 - 7105 Brake Platform

- 2 - 7138 Roof Walk End Supports
- 8 - 7144 Crossbearers
- 4 - 7139 Corner Steps
- 10 - 7126 Drop Type Grab Irons
- 4 - 6008 Large Door & End Placards
- 2 - 6009 Small Door Placards
- 4 - 7129 Ladders
- 2 - 7128 90° Roof Platform Hand Hold
- 2 - 7165 Roof Walk End Platforms
- 2 - 7166 Roof Walk End Platform Supports
- 80 - 6007 Escutcheon Pins
- 30 - 6006 Nails 1/2" long

Bag #3

- 1 pr. Sides

Bag #4 Trucks

- 2 - 6035 Truck Bolsters
- 4 - 6191 Sideframes
- 12 - 6201 Truck Springs
- 4 - Spring Planks
- 4 - 6275 Wheel Sets

Bag #5

- 1 pr. Kadee Couplers

ONLY THE BEST IS GOOD ENOUGH FOR OUR CUSTOMERS



Member
Model Railroad Industry Assn.

REYNOLDS RAILROAD PRODUCTS

MANUFACTURER OF ATHEARN O SCALE KITS

4711 E. WASHINGTON STREET • INDIANAPOLIS, INDIANA 46201 • PHONE (317) 352-1371

ASSEMBLY INSTRUCTIONS - 40' SINGLE DOOR BOXCAR

1 UNDERFRAME AND FLOOR ASSEMBLY

Insert Bolster Bearing Blocks and Cross Members in Frame channel. Attach to Floor with short 4-40 screws.

2 CONSTRUCTING WOOD BODY, ATTACHING WOOD SIDES AND SILL STEPS

Nail and glue End Blocks in position between Roof and Floor flush with Sides and Ends of both members. Fasten Wood Sides in place shoving tightly under Roof overhang and sanding lower edges flush with bottom of Floor. For additional strength and durability, cement the Wood Sides in place. After cement has set, remove pre-punched door opening by cutting with a sharp knife. Nail Steps in position. The Sides should be notched for Steps in order that the metal sides will have a smooth backing. Check the fit of the Roof and Ends. It may be necessary to sand the end of the Roof and End block slightly for a perfect fit.

3 ASSEMBLY OF BODY — SIDES, ENDS AND DOORS

Drill Metal Ends with $\frac{1}{32}$ " holes to fasten End hardware as shown, remembering that Brake Housing and Platform appear on only one end. Cement End Plate ($\frac{3}{8}$ " x $\frac{1}{2}$ ") on both ends of the car. Cement large ($\frac{3}{8}$ " x $\frac{1}{2}$ ") and small ($\frac{1}{4}$ " x $\frac{3}{8}$ ") plates on Doors. Refer to picture for proper position. Assemble Metal Sides, Door Guides, Doors and Ends. Riveted edge of the Ends is to fit over the Sides.

4 MOUNTING METAL ROOF, RIBS, RUNNING BOARD AND END PLATFORMS

Drill $\frac{1}{32}$ " holes in the roof for the Corner Platform, Support and Corner Grab. Mount Metal Roof Ribs as shown on drawing. The ends of the Metal Roof Ribs may be folded over the edge of the Roof and cemented in place or pierced with a $\frac{1}{32}$ " drill to accept pins. Mount Roof in place with end of Roof overlapping Car End. Nail Roof Walk, End Platforms, Corner Platforms with supports and Corner Grabs in place.

5 MOUNTING THE SPRUNG TRUCKS, AB BRAKE SYSTEM AND KADEE COUPLERS

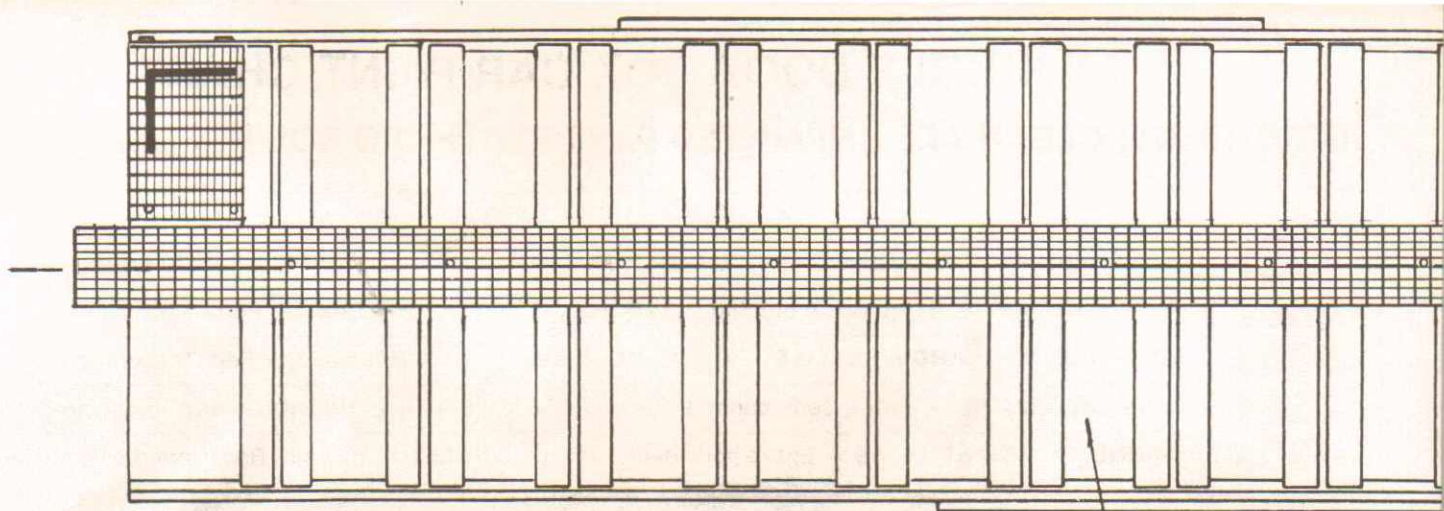
Drill holes in the Floor for inserting the lugs on the AB Brake parts. Cement these in place. Assemble Kadee Couplers as per manufacturer's instructions. Mount Coupler, with the 6 screws furnished, as shown. Attach the Sprung Trucks using long 4-40 screws and coil springs.

6 FINISHING THE MODEL

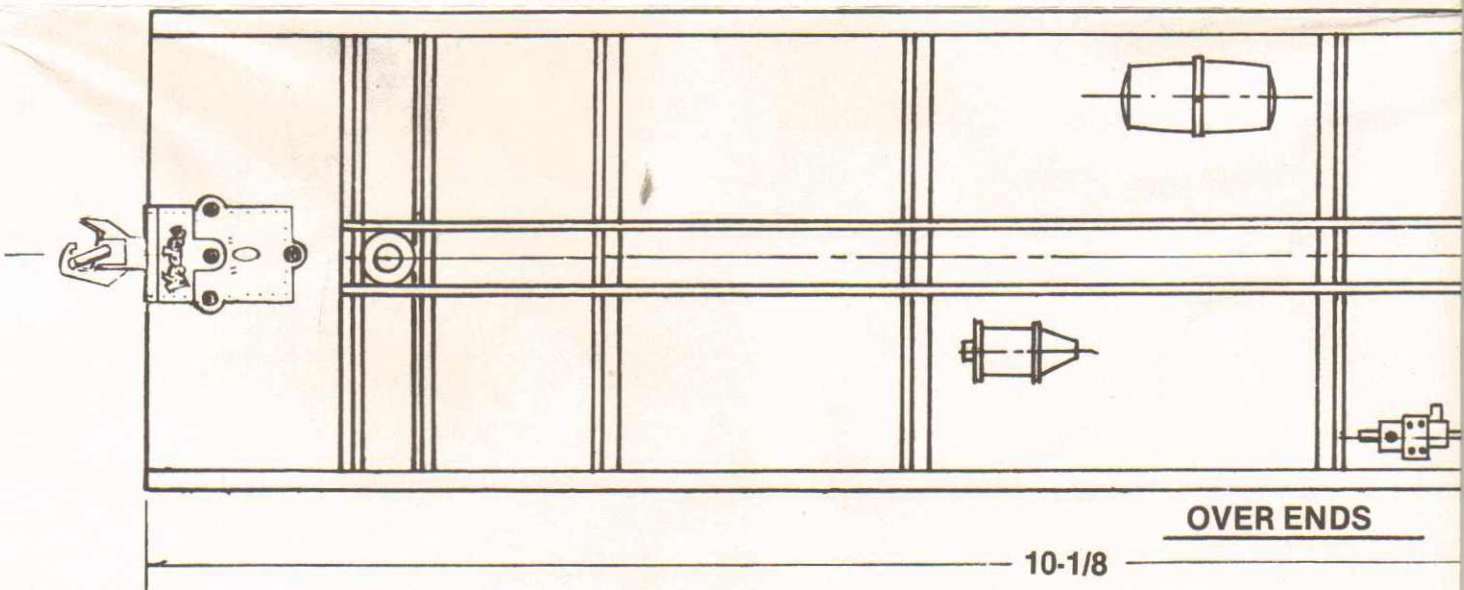
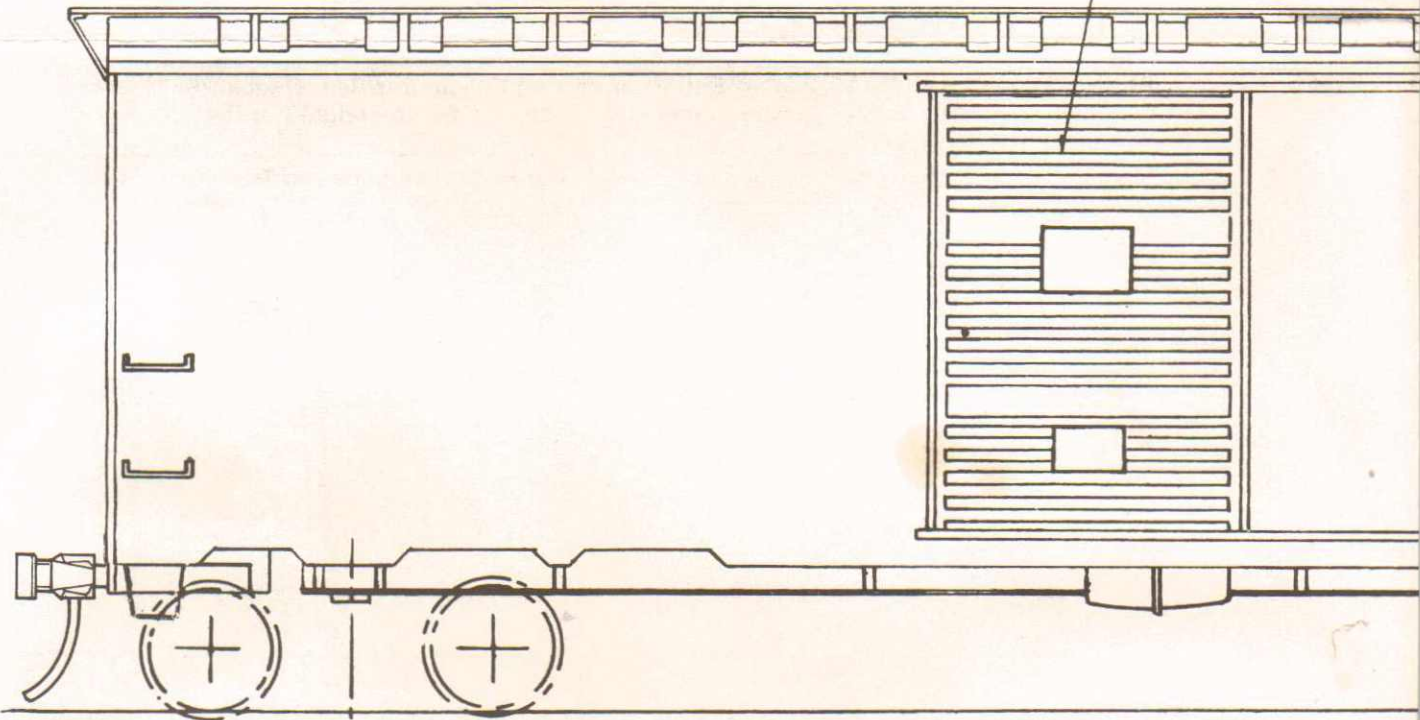
Attach Ladders and Grabs to the Sides and Ends of the car. Fasten the Gear Box and Brake Wheel as shown on the drawing and install the Brake Platform. The Brake Rod is a straight piece of wire slipped through the hole in the Brake Platform. Bend and force the end into the car floor. (Brake Rod wires not furnished.)

7 PAINTING

Suggestion: The builder may choose to paint many of the component parts before assembly and then when the construction of the car is complete, only a small amount of touchup needs to be done to result in a neat, professional appearing model. For a perfect match of the car sides, use paint chart on reverse side.

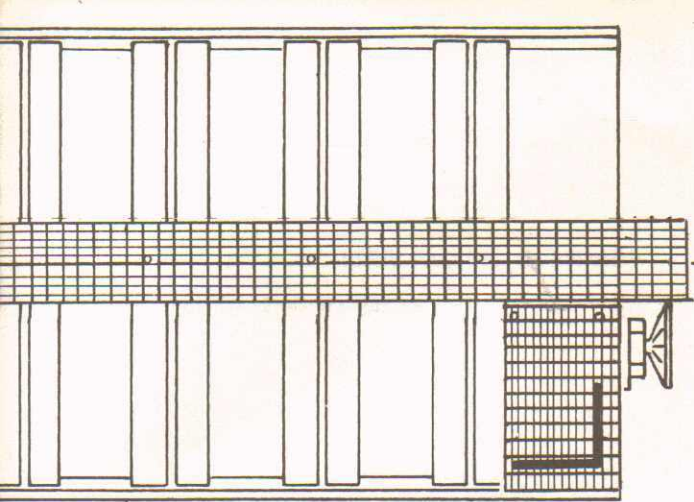


METAL ROOF
METAL DOORS AND

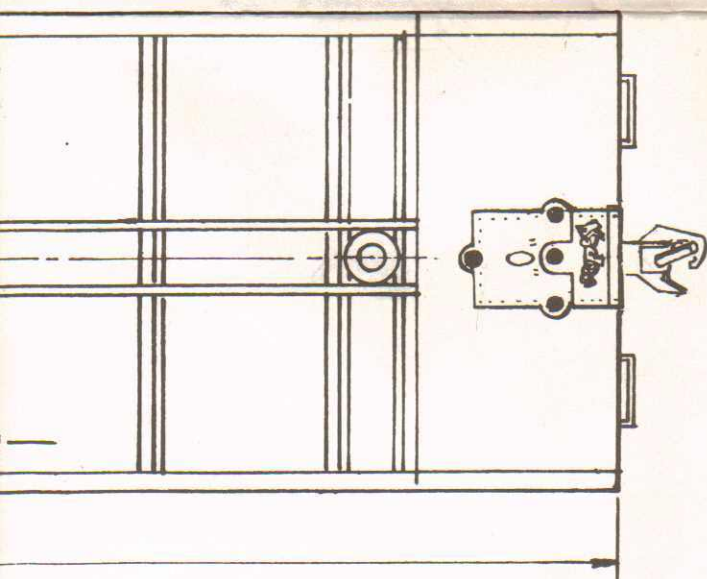
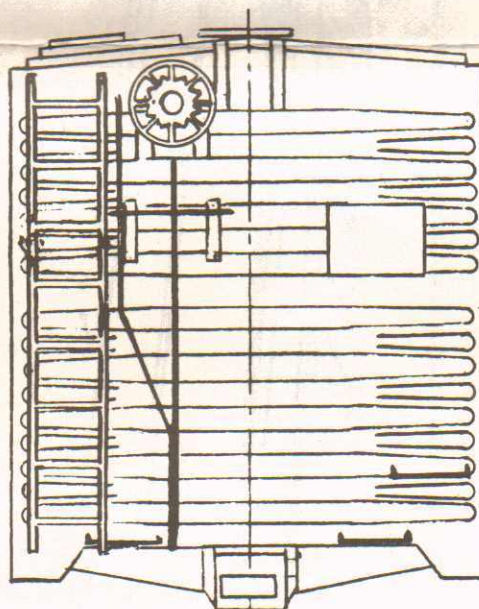
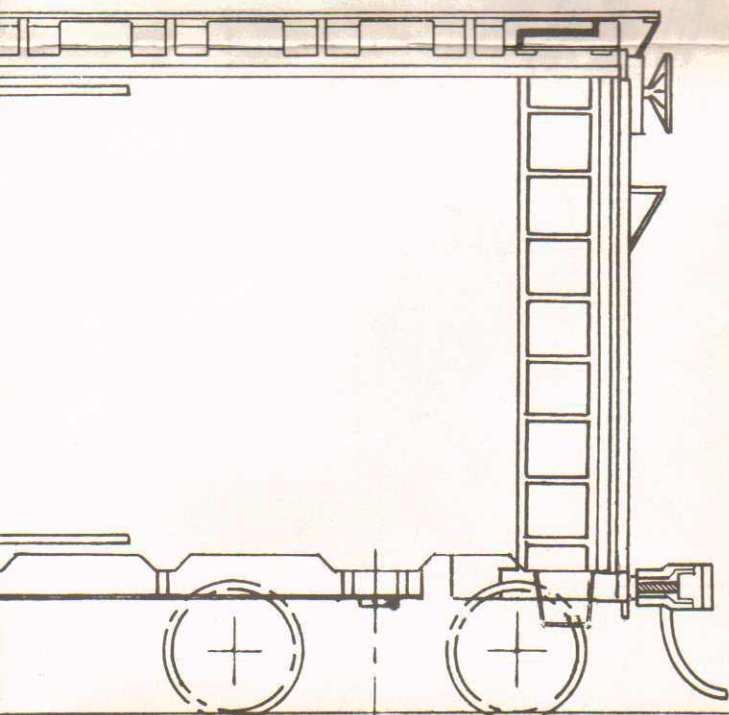
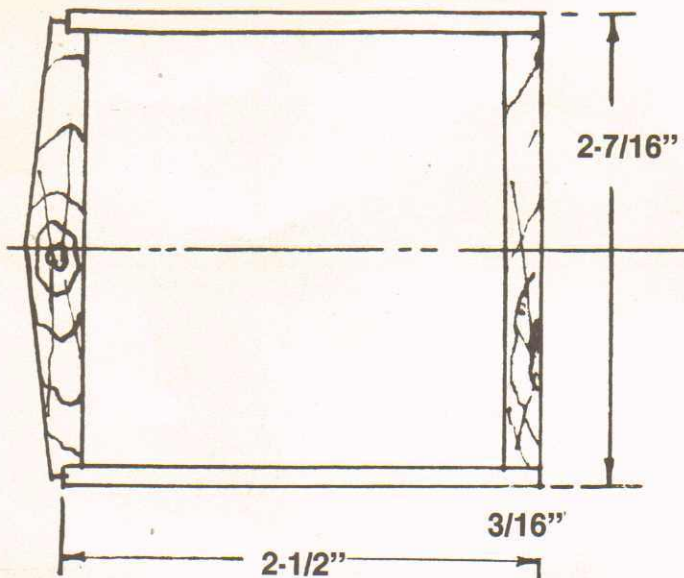


OVER ENDS

10-1/8



TRIMMINGS

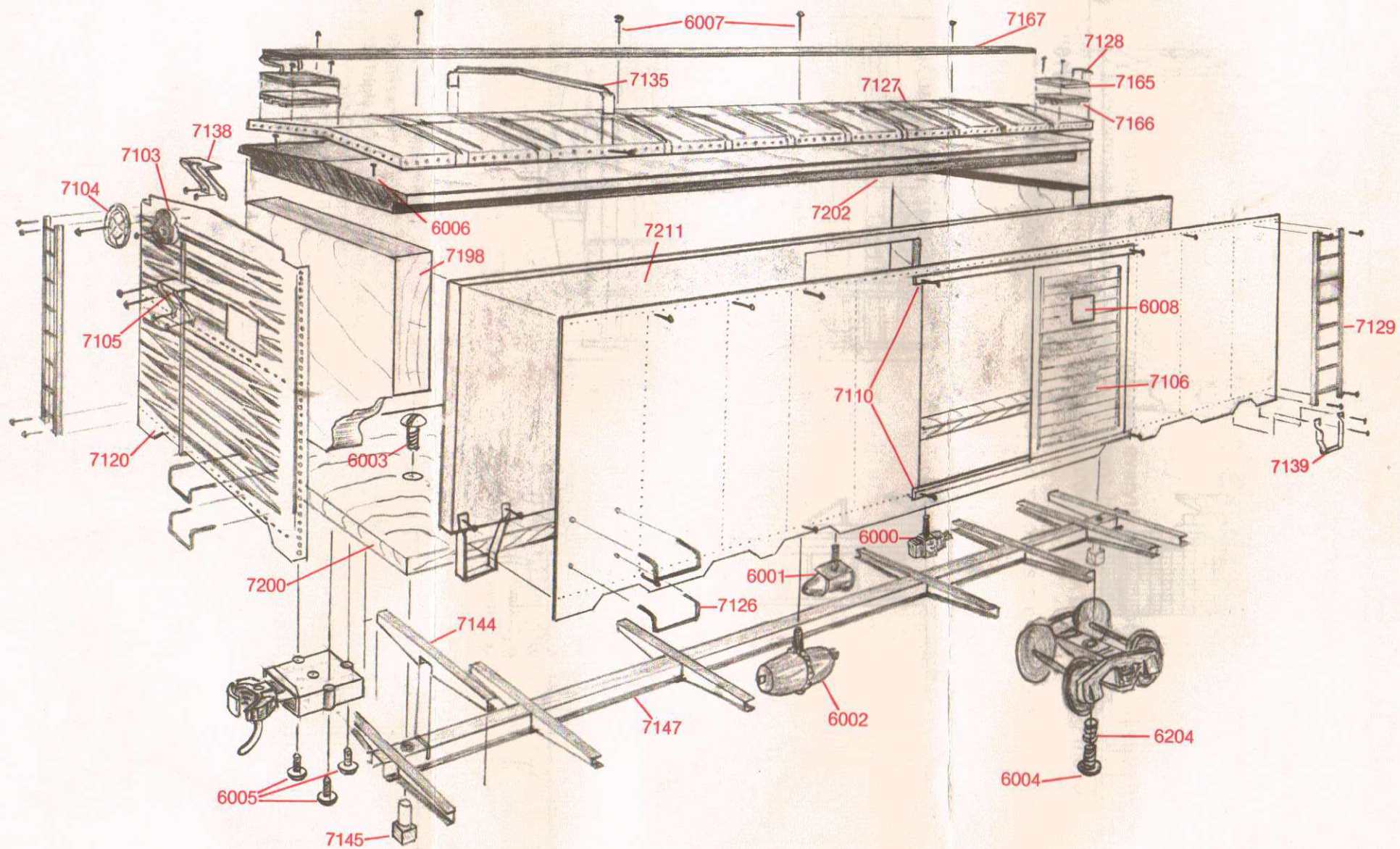


CONSTRUCTION NOTES

- Use #76 (.020) Drill to drill ends for Grab Irons
- Use #65 (.035) Drill to drill ends for mounting ladders, brake platform, roofwalk end supports, etc.
- Use 1/2" brads and white glue to assemble wood parts, roof, ends, floor and sides.
- Use pins and Contact Cement or Goo to attach metal roof to wood underbody.
- Use Contact Cement or Goo to attach metal ends to wood underbody.
- Do not fasten metal sides permanently until balance of model is completed and painted. Sides should then be attached using Contact Cement or Goo and Pins.
- Test fit each part before final assembly.
- All Black parts are treated to resist rust only.
- If defects or shortages are noted in this Kit, please write directly to: **REYNOLDS RAILROAD PRODUCTS**



4711 E. Washington St.
Indianapolis, IN 46201



40' SINGLE DOOR BOX CAR PAINT CHART

IMPORTANT! CLEAN ALL UNPAINTED PARTS WITH DIO-SOL BEFORE PAINTING

KIT NUMBER	ROAD NAME
0301	SOUTHERN PACIFIC OVERNIGHT — Entire car (including trucks) painted Floquil RR10 Black.
0302	UNION PACIFIC — Entire car (including trucks) painted Floquil RR74 Box Car Red.
0303	SPOKANE PORTLAND & SEATTLE — Entire car painted Floquil RR74 Box Car Red, Trucks are black.
0304	BOSTON & MAINE — Entire body painted Floquil RR56 Big Sky Blue, Underbody and Trucks are black.
0305	MINNEAPOLIS & ST. LOUIS — Entire body painted Floquil RR135 S.P. Daylight Red, Underbody and Trucks are black.
0306	DELAWARE & HUDSON — Entire car (including trucks) painted Floquil RR74 Box Car Red. Note: Newer cars had underbody and trucks black.
0307	COTTON BELT — Entire body painted Floquil RR25 Tuscan Red. Underbody and Trucks are black.
0308	NEW YORK CENTRAL PACEMAKER — Upper half of sides and ends and entire roof painted Scale Coat N.Y.C. #58 Pacemaker Red. Lower half of sides and ends painted Scale Coat #65 Light Gray. Underbody and trucks are black. Entire door painted N.Y.C. Pacemaker Red. Note: Later cars had solid red ends.
0309	PENNSYLVANIA RAILROAD X-37 — Entire car painted Freight Car Red (Floquil RR601 Primer) Note: Floquil RR601 Zink Chromate Primer is the closest color to Freight Car Red. Trucks either Freight Car Red or Black.
0310	MONON — Entire Body painted Floquil RR74 Box Car Red. Underbody and Trucks are black.