

OLD PULLMAN

Model Railroads, Inc.

quality + service
since 1965

8195-25th St.

P.O. Box 690128, Vero Beach, FL 32969-0128

© (561) 562-1480 FAX (561) 770-0759

español (561) 563-9657

394

Assembly Instructions for Box Cars 40' + 50'

1.) Underframe + Floor Assembly

Insert Bolster Bearing Blocks (7145) and Crossbearers (7144) in Underframe (7147). Attach to Floor (7200) with short 4-40 screws (6003).

2.) Constructing Wood Body, Attaching Wood Sides and Steps

Glue End Blocks (7198) in position between Wood Roof (7202) and Floor (7200) flush with Sides and Ends of both members. If you want operating doors, cut out openings in Wood Sides (7211) and glue them in place shoving tightly under Roof overhang and sanding lower edges flush with bottom of floor. Nail Corner Steps (7139) in position. The Sides (7211) should be notched for Steps in order that the metal sides will have a smooth backing. Check the fit of the Wood-Roof and -Ends; it may be necessary to sand the ends of the Roof and End Blocks slightly for a perfect fit.

3.) Assembly of Metal-Sides, Doors and Ends

Drill Metal Ends (7122) with 1/32" holes to fasten End hardware as shown, remembering that Brake Housing (7103) and Platform (7105) appear on only one End. - Cement one large (6008) and one small (6009) Placards to each Door (7106). If your kit is supplied with prepainted sides and ends, now prepaint Doors, Door Guides (7110) and 2 Ladders (7129). - Nail and glue Metal Sides to Wood Sides making sure that metal and wood sides are flush on top. Attach Door Guides, Doors and Ladders. - Install Metal Ends; the riveted edges fit over ends of metal sides.

4.) Mounting Metal Roof, Ribs, Running Board and End Platforms

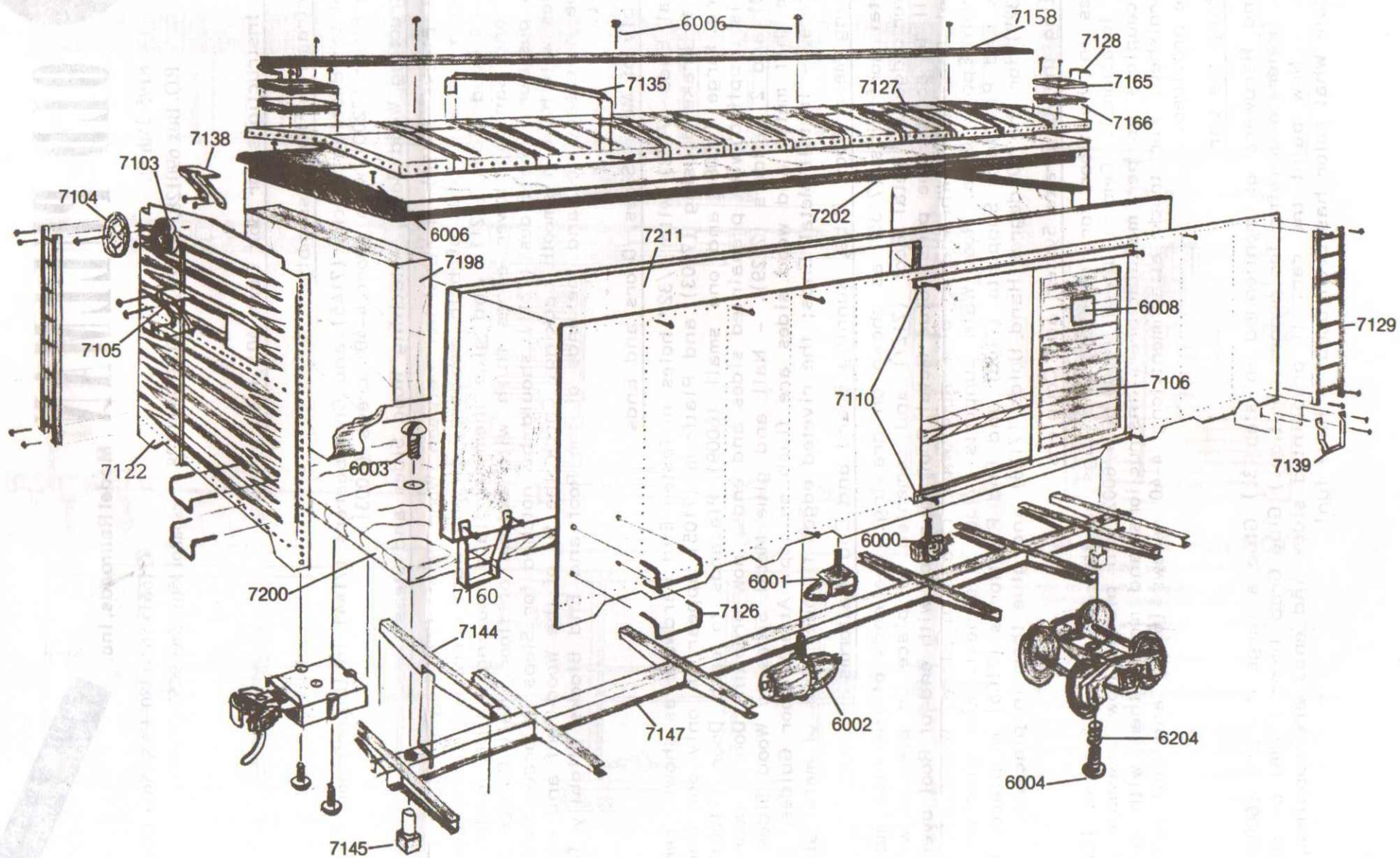
Mount Metal Roof Ribs (7135) as shown on drawing. The ends of the ribs may be folded over edge of Metal Roof (7127) and cemented in place or pierced with a 1/32" drill to accept the pins. Glue Metal Roof in place with end of Roof overlapping metal Car Ends. When dry, glue Roof Walk (7167) in place. We obtain best results with Epoxy Glue. Roof Walk Supports (7138) are next. Now glue or nail Roof Walk End Platform Supports (7166) and End Platforms (7165) in place. Drill holes (1/32") for the 90 degree Hand Holds (7128) and glue them in place.

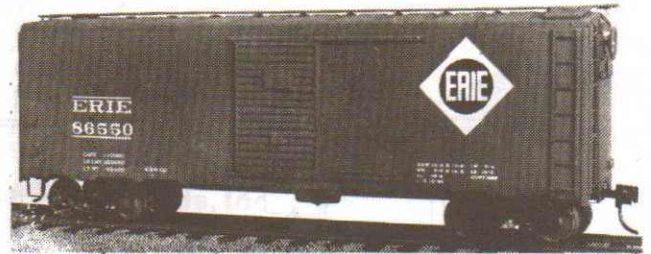
5.) Mounting the AB Brake System and Couplers

Drill holes in the floor for inserting the lugs on the AB Brake System. (Check plan for locations). Cement these (6000/6001/6002) in place. Now assemble your favorite couplers as per manufacturers instructions and mount them with screws (6005) furnished. For truck attachment, long 4-40 screws (6004) and coil springs (6204) are provided.

6.) Finishing the Car

Install End Hardware as mentioned in step 3.) Glue a large Placard (6008) on each end. (Refer to drawing for proper position.) Glue Grab Irons (7126) on sides and ends. - Now paint the car. If prepainted sides and ends are supplied, we will indicate what color has been used. - Have fun!





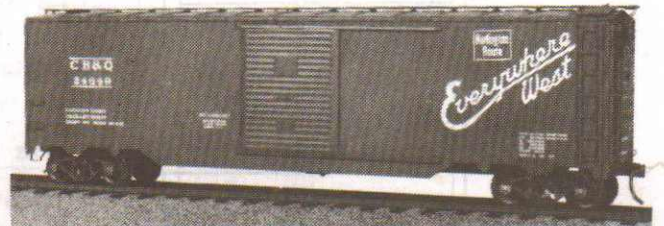
PARTS LIST - 40' SINGLE DOOR BOX CAR

2 #7211 Wood Sides	1 #6000 Triple Valve	8 #7144 Crossbearers
2 #7300 Metal Sides	1 #6001 Brake Cylinder	2 #7139 Corner Steps
1 #7200 Wood Floor	1 #6002 Reservoir	2 #7160 Left Side Steps
1 #7202 Wood Roof	2 #7145 Bolster Bearing Blocks	10 #7126 Grab Irons
1 #7127 Metal Roof	1 #7103 Brake Gear Box	2 #7128 90° Roof Platform Hand Hold
1 #7147 Underframe Sill	1 #7104 Brake Wheel	2 #6008 End Placards
1 #7158 Roof Walk	1 #7105 Brake Platform	2 #7165 Roof Walk End Platform
2 #7198 Wood Ends	2 #6003 Bolster Bearing Screws 4-40x $\frac{1}{4}$	2 #7166 Roof Walk End Platform Supports
2 #7122 Metal Ends	2 #6004 Truck Kingpin Screws 4-40x $\frac{1}{2}$	4 #7129 Ladders
2 #7106 Metal Doors	2 #6204 Bolster Springs	50 #6006 Escutcheon Pins
4 #7110 Door Guides	12 #7135 Roof Ribs	1 Brake Brass Rod
	2 #7138 Roof Walk End Supports	

PARTS LIST - 40' DOUBLE DOOR BOX CAR

Parts same as 40' Single Door Box Car, except:

- 2 #7800 Metal Sides
- 4 #7106 Metal Doors
- 4 #7115 Door Guides



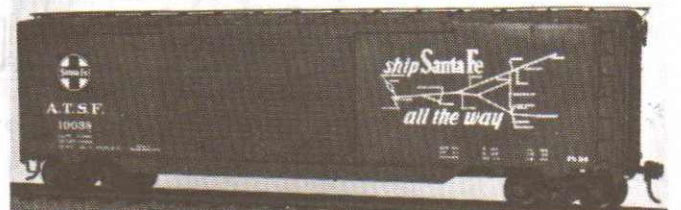
PARTS LIST - 50' SINGLE DOOR BOX CAR

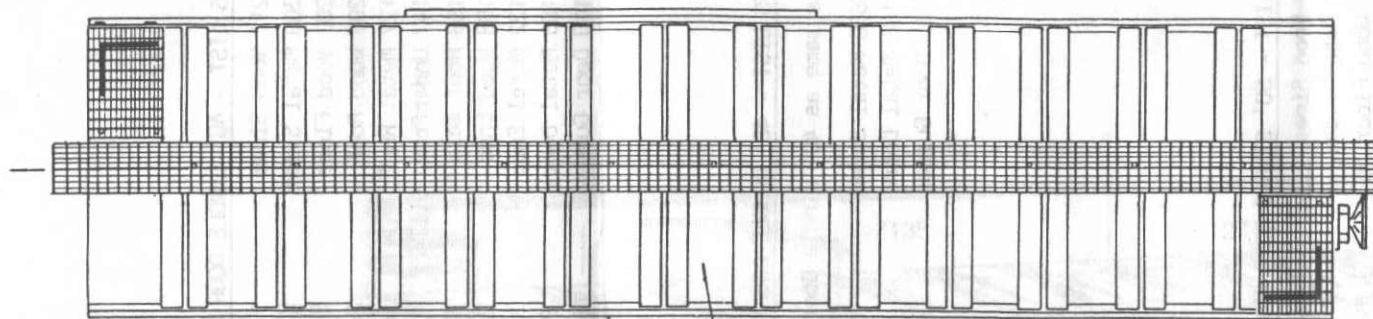
2 #7212 Wood Sides	1 #6000 Triple Valve	10 #7144 Crossbearers
2 #7400 Metal Sides	1 #6001 Brake Cylinder	2 #7139 Corner Steps
1 #7201 Wood Floor	1 #6002 Reservoir	2 #7160 Left Side Steps
1 #7203 Wood Roof	2 #7145 Bolster Bearing Blocks	10 #7126 Grab Irons
1 #7132 Metal Roof	1 #7103 Brake Gear Box	2 #7128 90° Roof Platform Hand Hold
1 #7148 Underframe Sill	1 #7104 Brake Wheel	2 #6008 End Placards
1 #7168 Roof Walk	1 #7105 Brake Platform	2 #7165 Roof Walk End Platform
2 #7199 Wood Ends	2 #6003 Bolster Bearing Screws 4-40x $\frac{1}{4}$	2 #7166 Roof Walk End Platform Supports
2 #7121 Metal Ends	2 #6004 Truck Kingpin Screws 4-40x $\frac{1}{2}$	4 #7129 Ladders
2 #7108 Metal Doors	2 #6204 Bolster Springs	80 #6006 Escutcheon Pins
4 #7112 Door Guides	15 #7135 Roof Ribs	1 Brake Brass Rod
	2 #7138 Roof Walk End Supports	

PARTS LIST - 50' DOUBLE DOOR BOX CAR

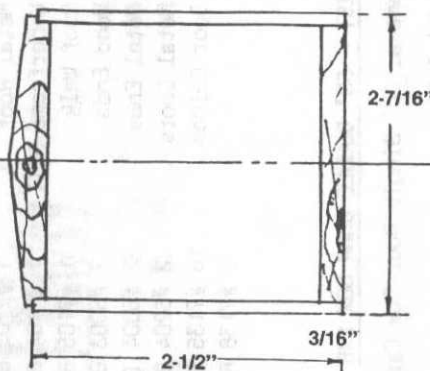
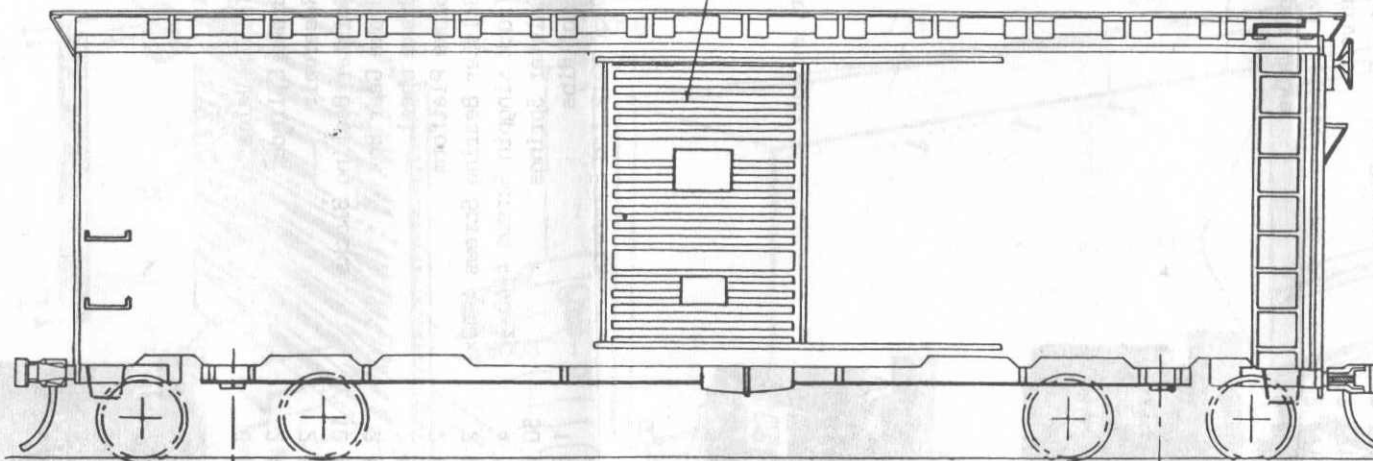
Parts same as 50' Single Door Box Car, except:

- 2 #7600 Metal Sides
- 4 #7108 Metal Doors
- 4 #7116 Door Guides



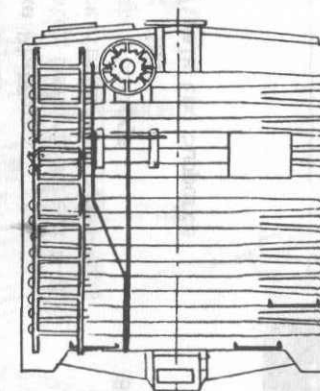


METAL ROOF
METAL DOORS AND TRIMMINGS



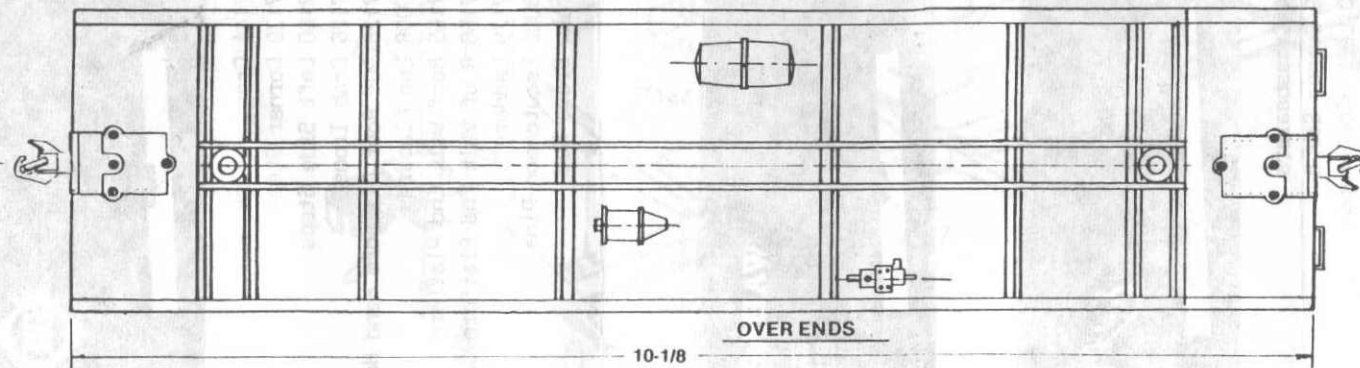
2-7/16"

2-1/2" 3/16"



CONSTRUCTION NOTES

- Use #76 (.020) Drill to drill ends for Grab Irons
- Use #65 (.035) Drill to drill ends for mounting ladders, brake platform, roofwalk end supports, etc.
- Use 1/2" brads and white glue to assemble wood parts, roof, ends, floor and sides.
- Use pins and Contact Cement or Goo to attach metal roof to wood underbody.
- Use Contact Cement or Goo to attach metal ends to wood underbody.
- Do not fasten metal sides permanently until balance of model is completed and painted. Sides should then be attached using Contact Cement or Goo and Pins.
- Test fit each part before final assembly.



OVER ENDS

10-1/8