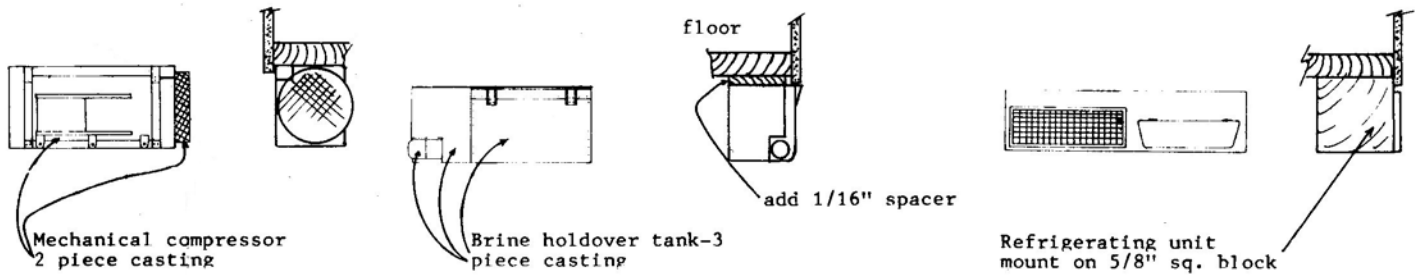


Keep in mind that, although these suggested underfloor arrangements may suit a particular car in a particular body style, you may find innumerable variations within the same style of A/C in use. We have seen photos of ice A/C'd cars where the layout of the ice bunkers and associated underbody components is entirely different than our suggested layout. The same is true of every one of the optional A/C systems now available in each kit.

In addition, when the A/C system was applied to the cars there was frequently a change in the location of various roof vents and in some cases this is only available from photo reference. In all cases, the best advise is "know your prototype".



ROOF HATCH LOCATION. THIS HATCH IS STANDARD WHEN APPLYING THE STEAM EJECTOR A/C SYSTEM. IT CAN BE APPLIED TO EITHER END OF THE CAR ROOF. SINCE THE ROOF IS EASILY CARVED, WE SUGGEST CARVING IN THE ROOF A SHALLOW SQUARE CAVITY SO THE HATCH SITS A LITTLE LOWER ON THE ROOF LINE.

